

The background features a repeating pattern of overlapping triangles and a grid of thin lines. The triangles are arranged in a staggered grid, with some pointing up and some pointing down. The lines are light gray and form a grid that intersects at the vertices of the triangles.

equity *Well*  
CITY CENTER

FASHION CLOTHES

FASHION CLOTHES

FASHION CLOTHES

FASHION CLOTHES

Phasellus vestibulum hendrerit dictum.

Origin Tex





Easy

SHOPPING



## PROJECT TYPE

Commercial

## LAND AREA

22.5 Katha / 16,202 sqft

## TOTAL NO OF SHOP

106 +12 Office

## PROJECT ARCHITECT

DWM4

## PROJECT LOCATION

945 & 954 O.R. Nizam Road, GEC Circle, Chattogram

## BUILDING HEIGHT

23 Storey

## PARKING SPACE

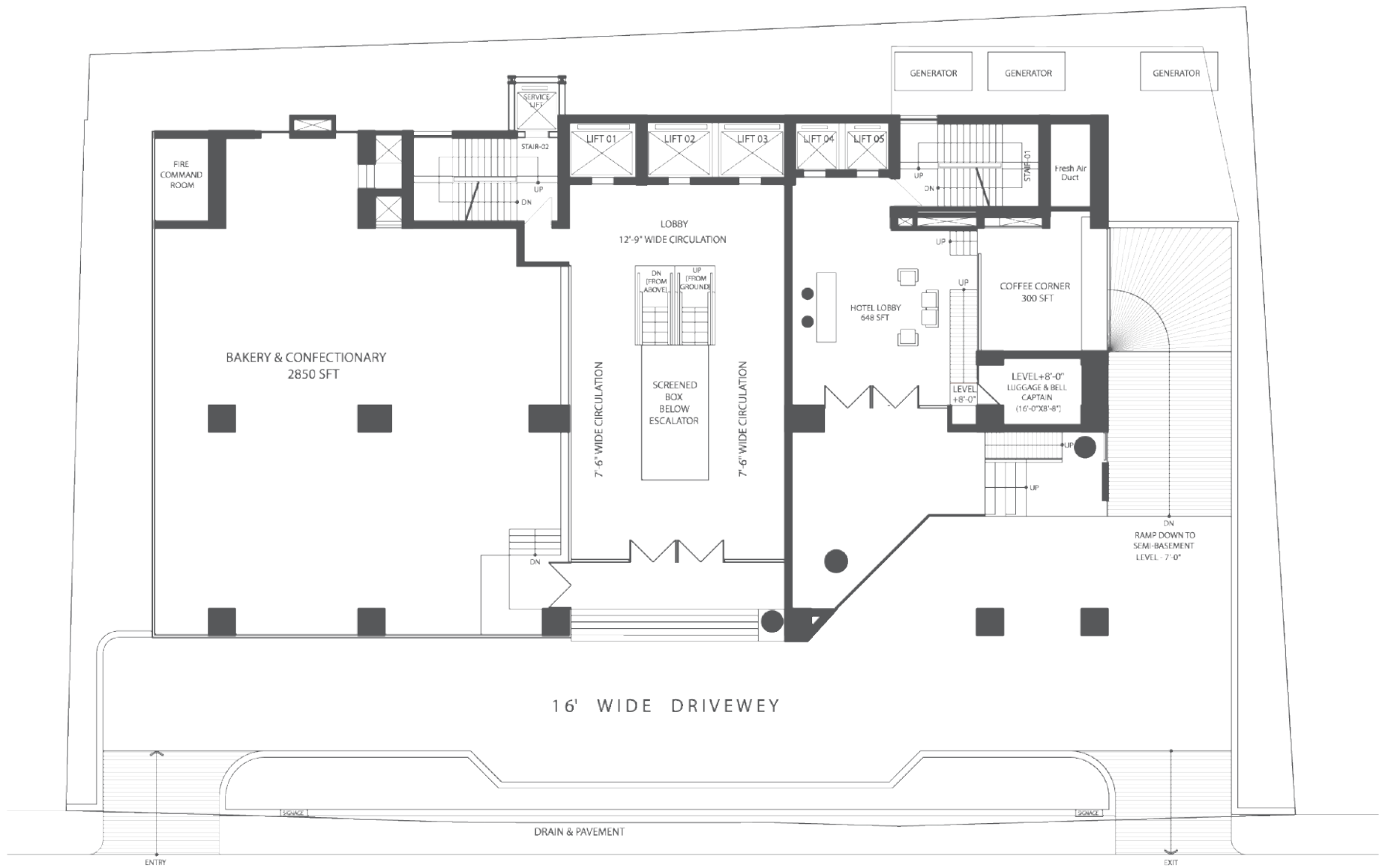
84

## STRUCTURAL DESIGNER

ESI (Dhaka)

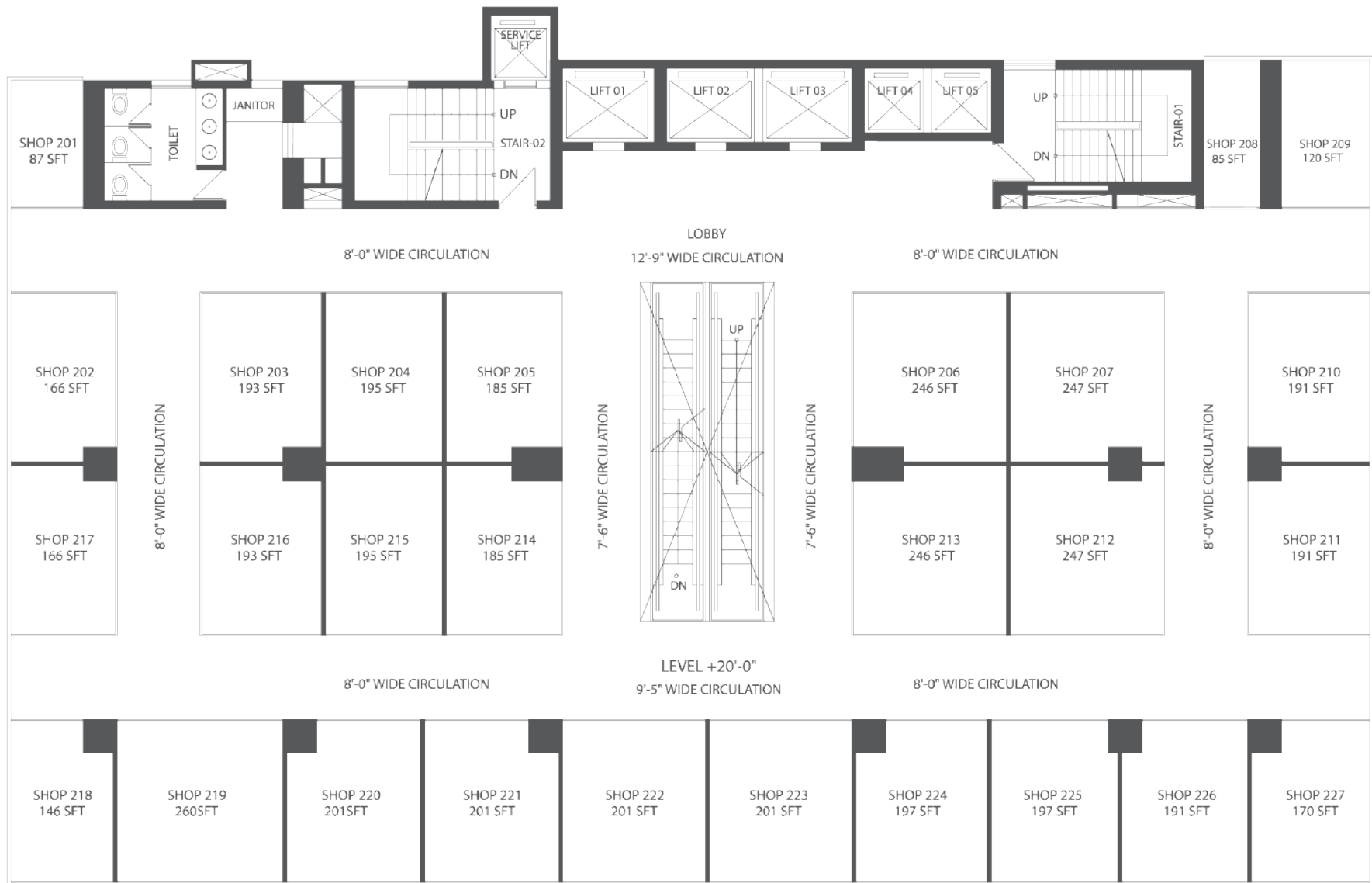


★ equity  
CITY



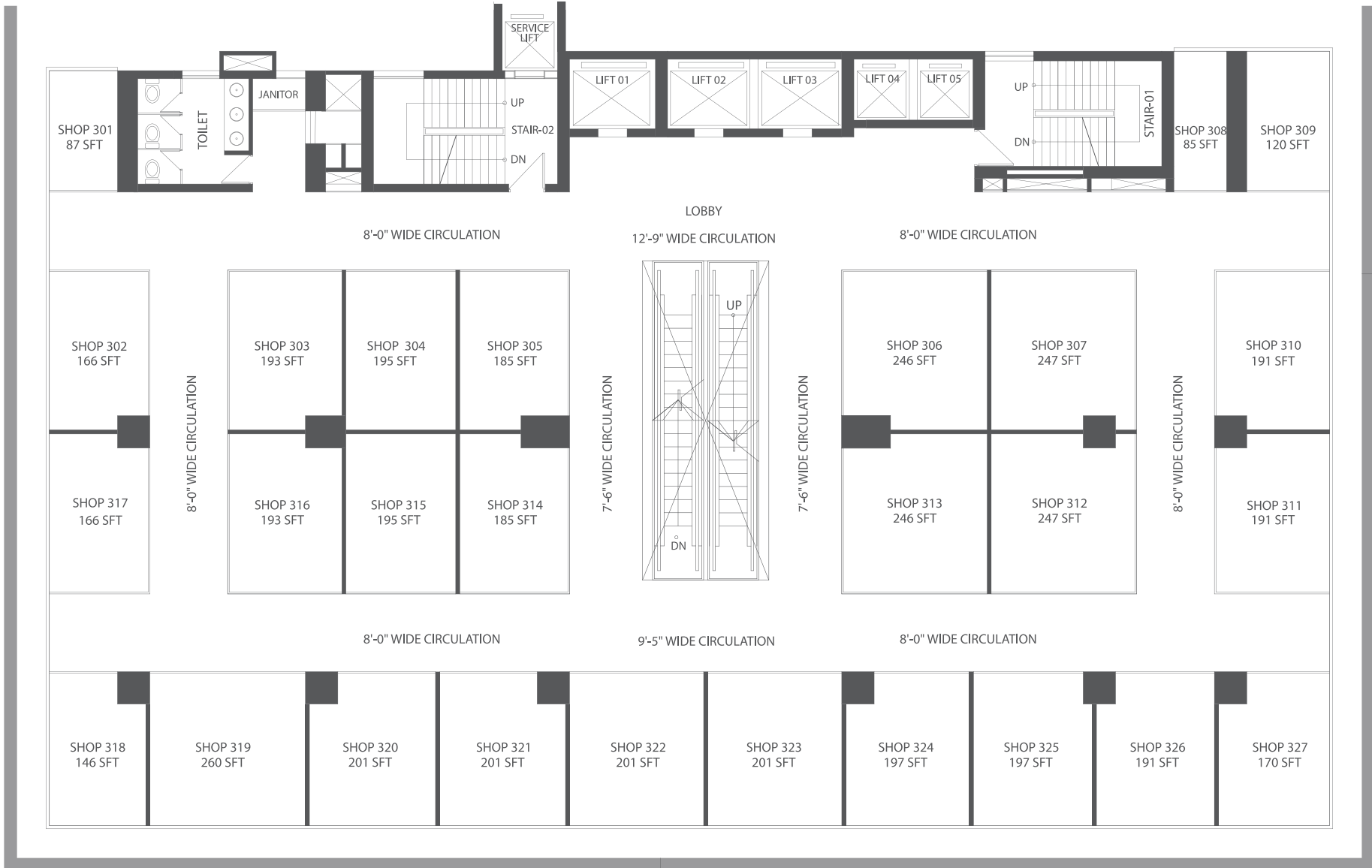
Coffee & Relaxation

GROUND FLOOR (LEVEL 1)



# Shopping

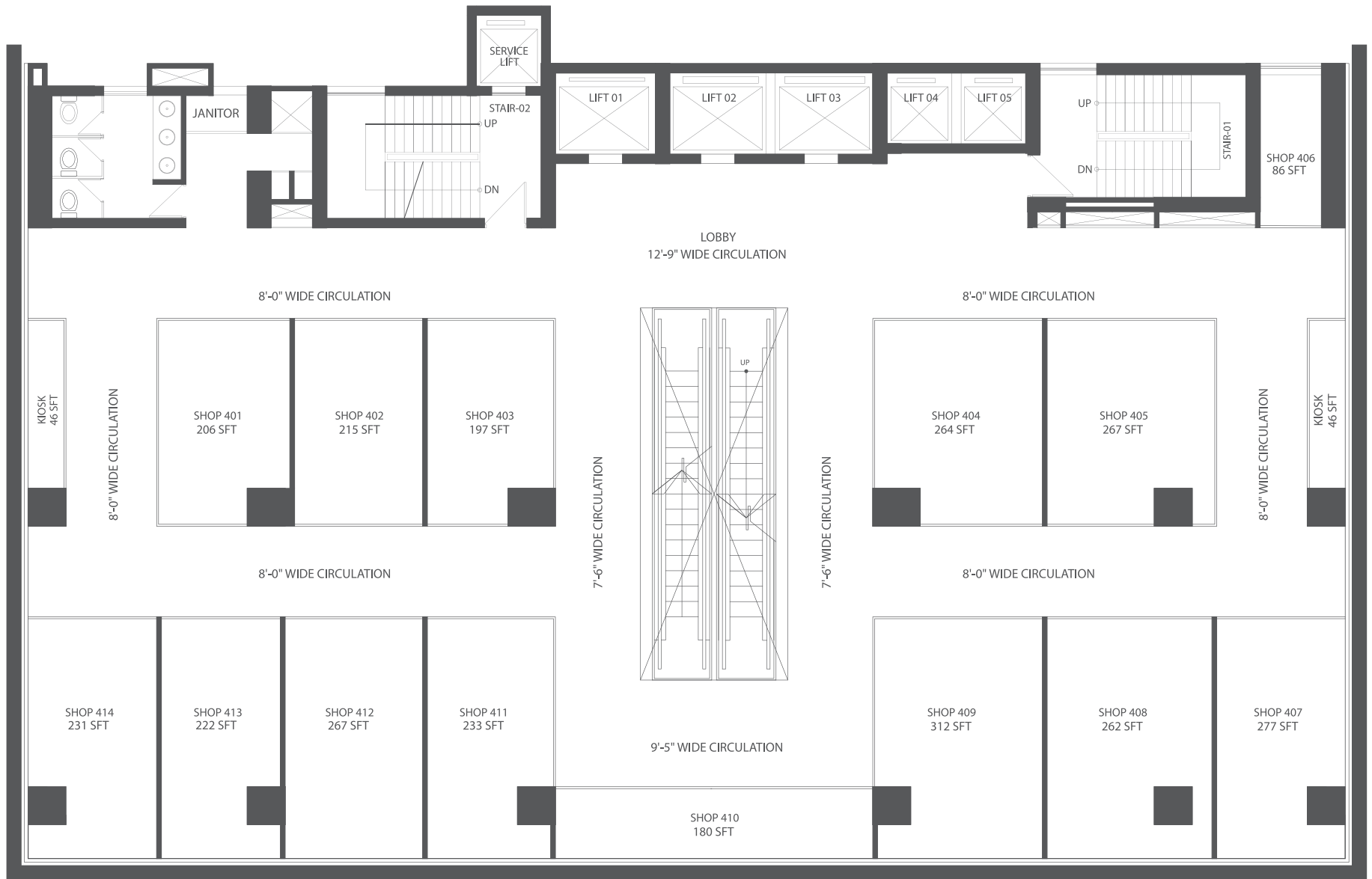
## LEVEL 2



Shopping

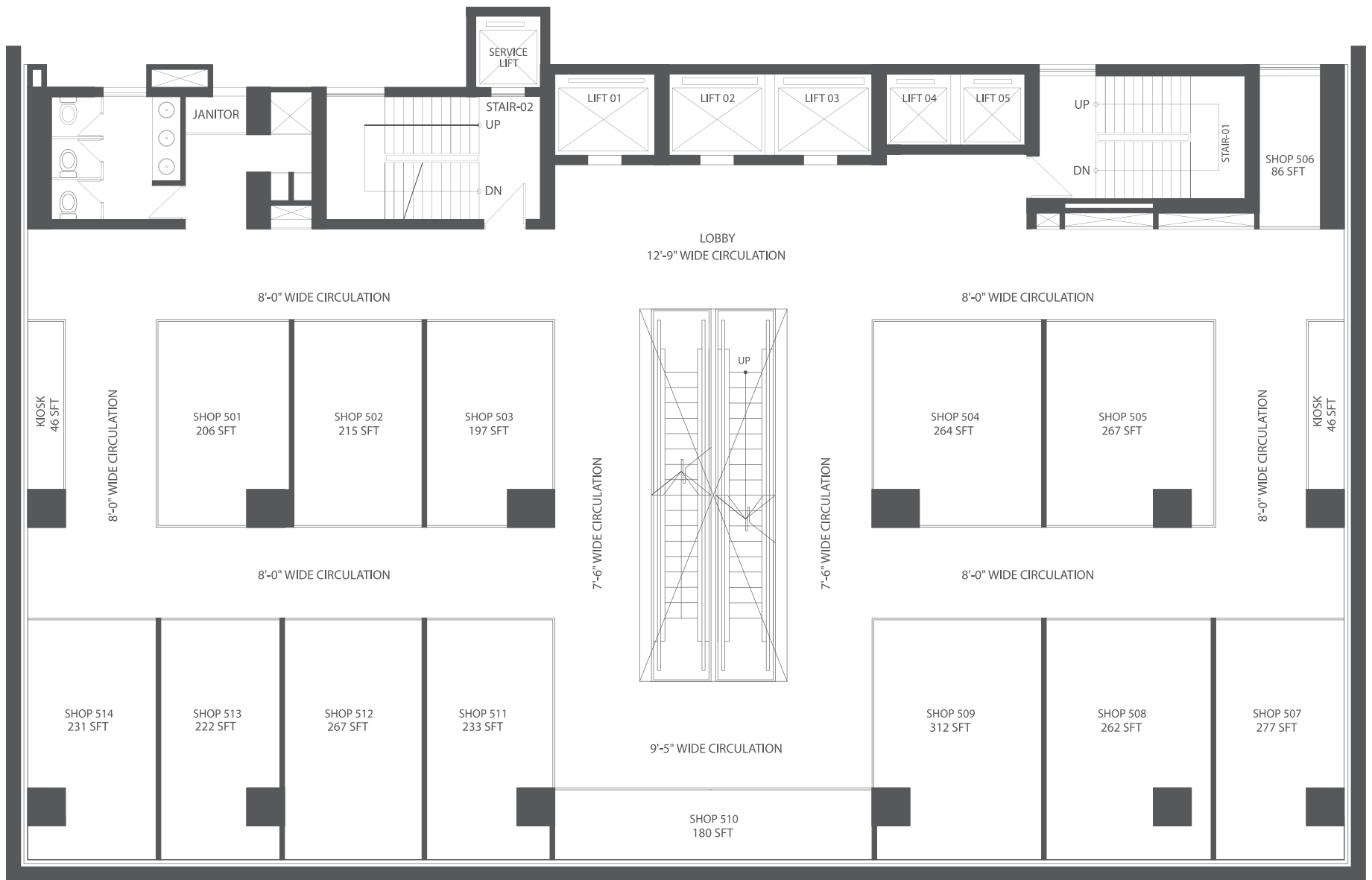
LEVEL 3





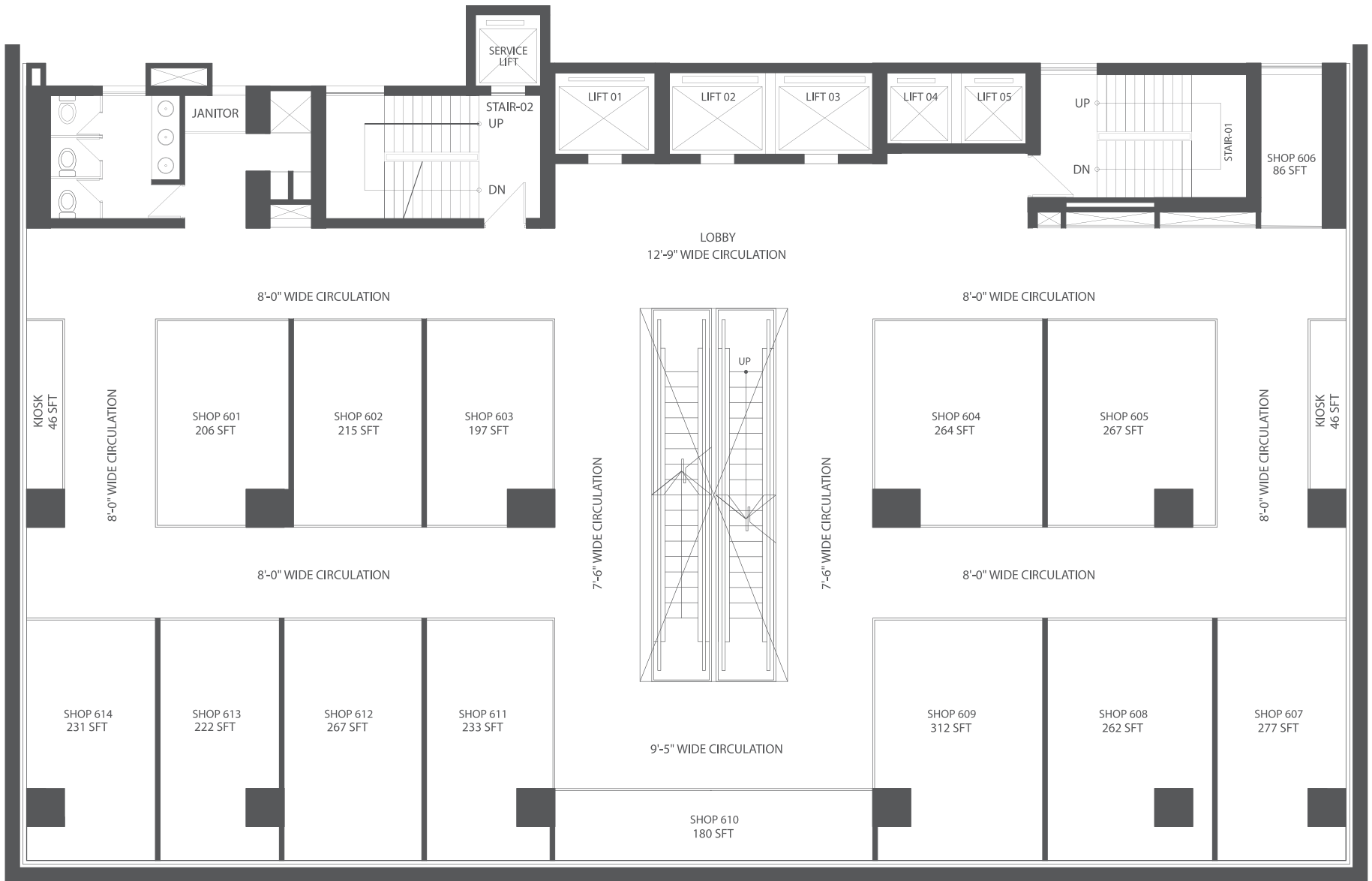
# Shopping

# LEVEL 4



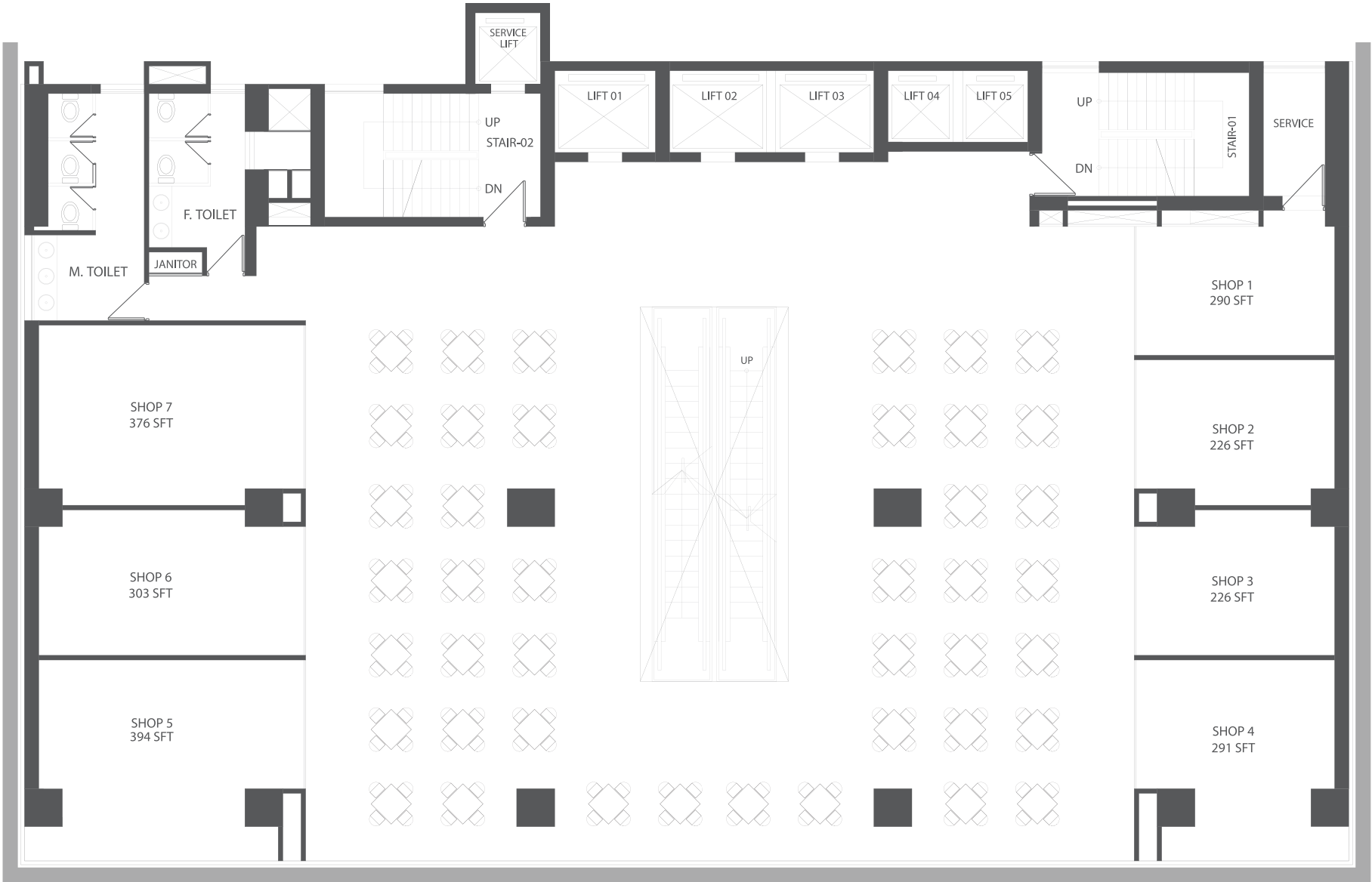
# Shopping

## LEVEL 5



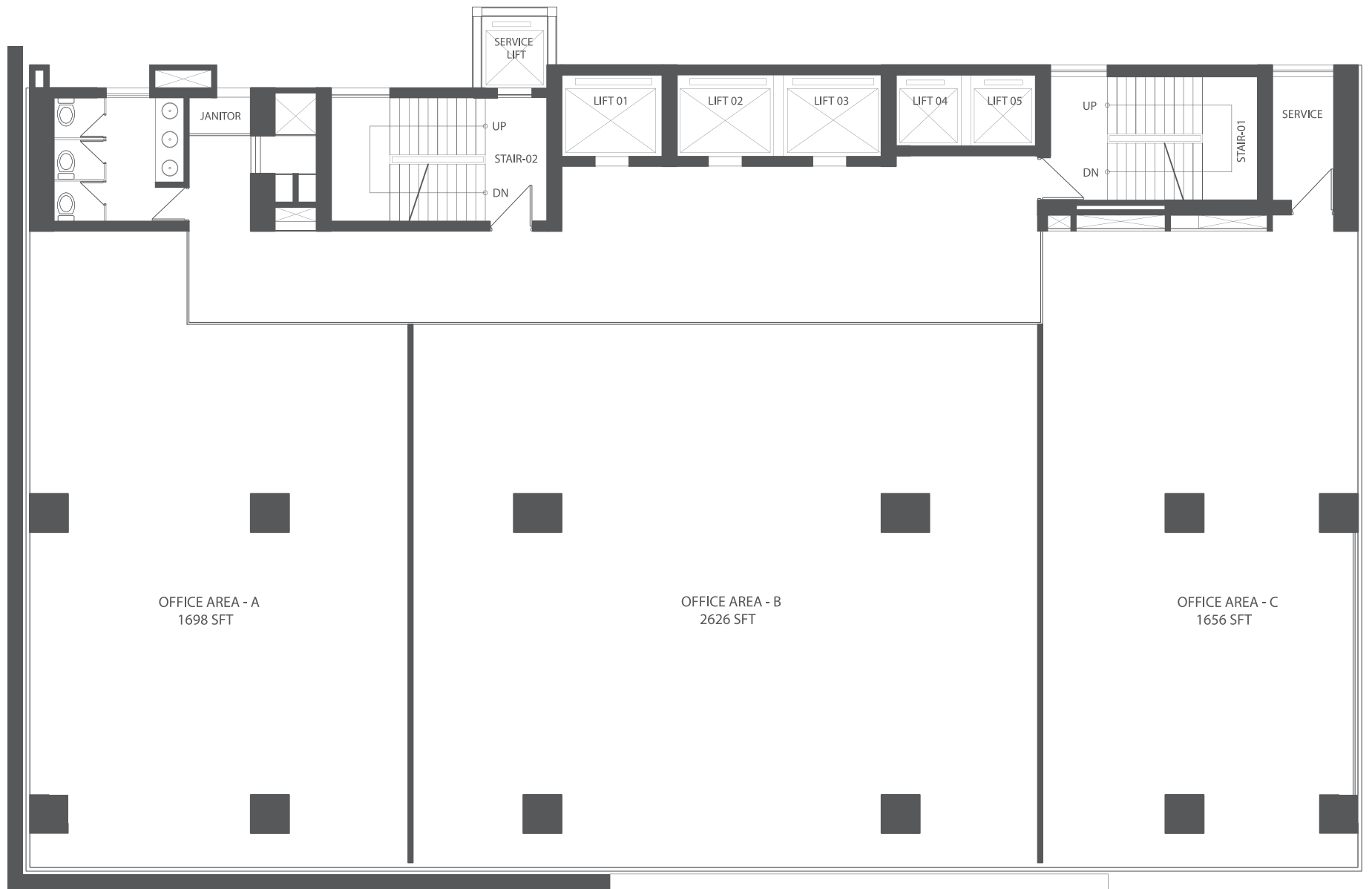
# Shopping

## LEVEL 6



Food Court

LEVEL 7



Office


LEVEL 8-11







Equity Point, 454 Panchlaish R/A, Probartak Circle, Chattogram

 01833 10 58 85